

# HPLC Analysis Report

Sample: Clomifene citrate

Lot No.: KB20141114

Buffer A: 0.04% TFA in 100% water(v/v)

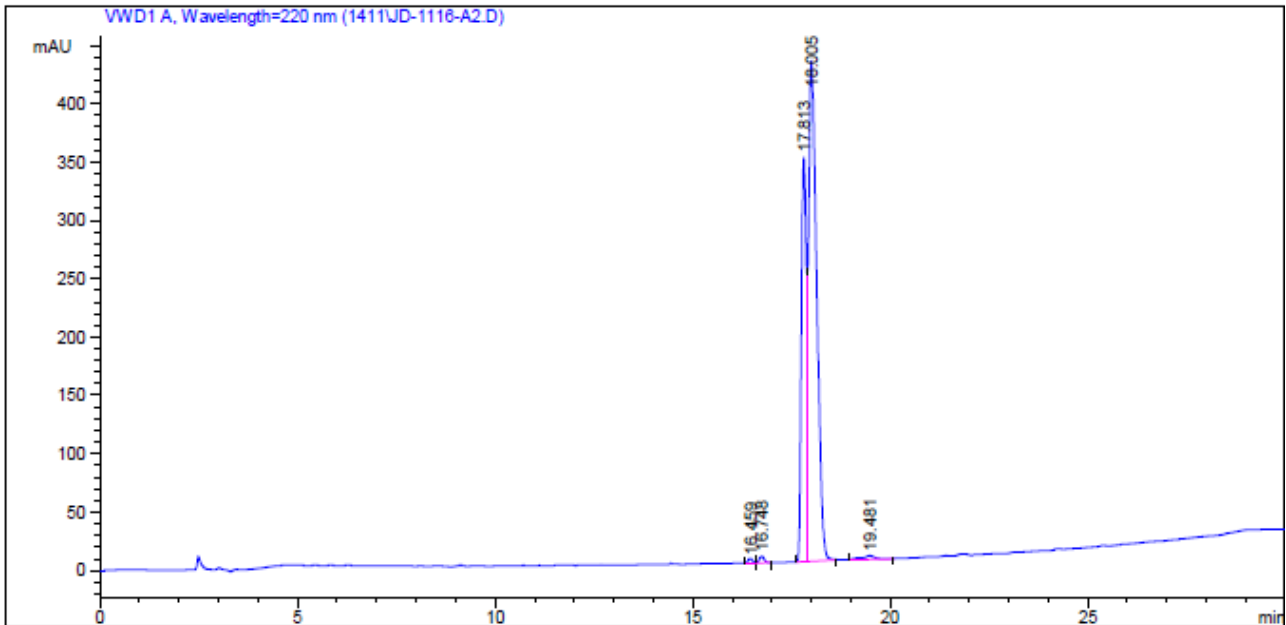
Buffer B: 0.04% TFA in 100% acetonitrile (v/v)

Gradient: 30-90% Buffer B in 25 min

Flow: 1ml/min Wavelength:220nm

Column: Alltima C18,4.6\*250mm,5um

Date: November 17, 2014



Chromatogram

Peak#	RetTime(Min)	Width(Min)	Area(mAU*s)	Height(mAU)	Area(%)
1	16.459	0.1306	28.56692	3.43208	0.3050
2	16.748	0.1296	46.74519	5.58995	0.4991
3	17.813	0.1342	2996.23608	346.98511	31.9934
4	18.005	0.2204	6224.14648	428.64008	66.4606
5	19.481	0.2910	69.47474	3.25840	0.7418
			9365.16942	787.90562	100

Purity: 98.45%

MS Spectrum

